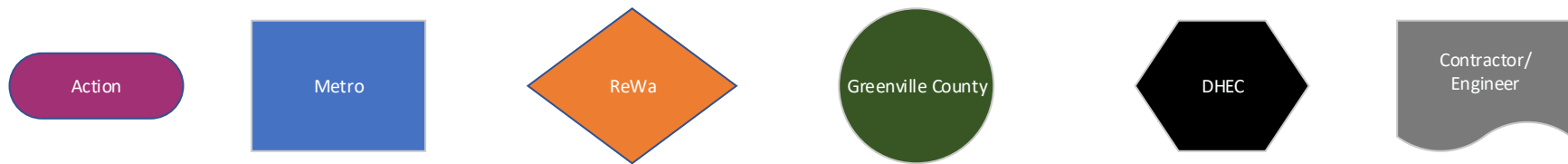


MetroConnects Development Project Workflow

SYMBOL KEY



FOOTNOTES

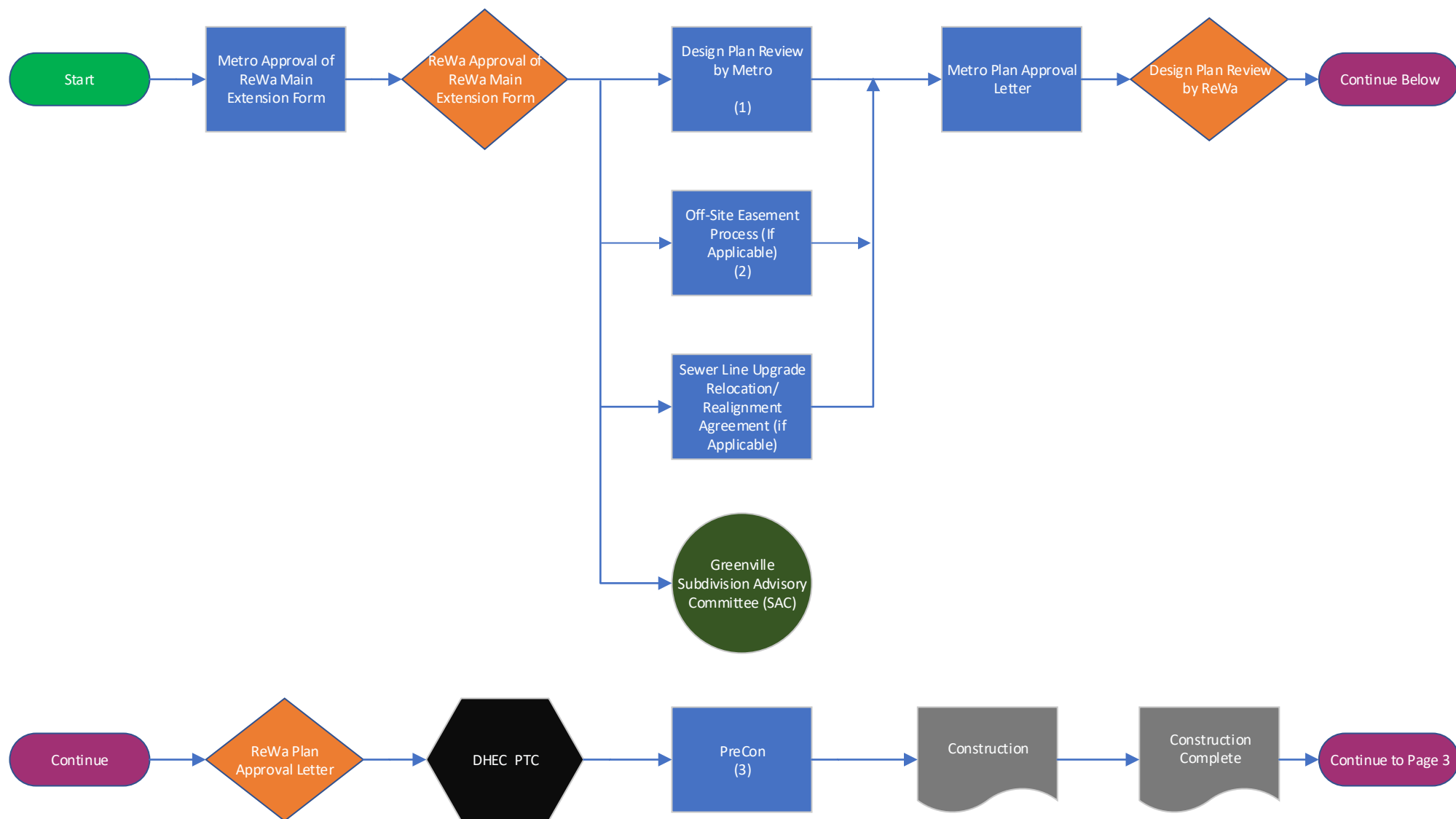
1. See Plan Review Submittal Checklist - Initial submittals to Toni Lewis, Dept. Asst. - **tlewis@metroconnects.org**
2. See Off-Site Easement Process
3. By Metro Staff
4. Upon Request by Contractor/Engineer - email: **inspectors@metroconnects.org**
5. See Closeout Submittal Checklist - Final packages emailed to Toni Lewis, Dept. Asst. - **tlewis@metroconnects.org**
6. See On-Site Easement Process

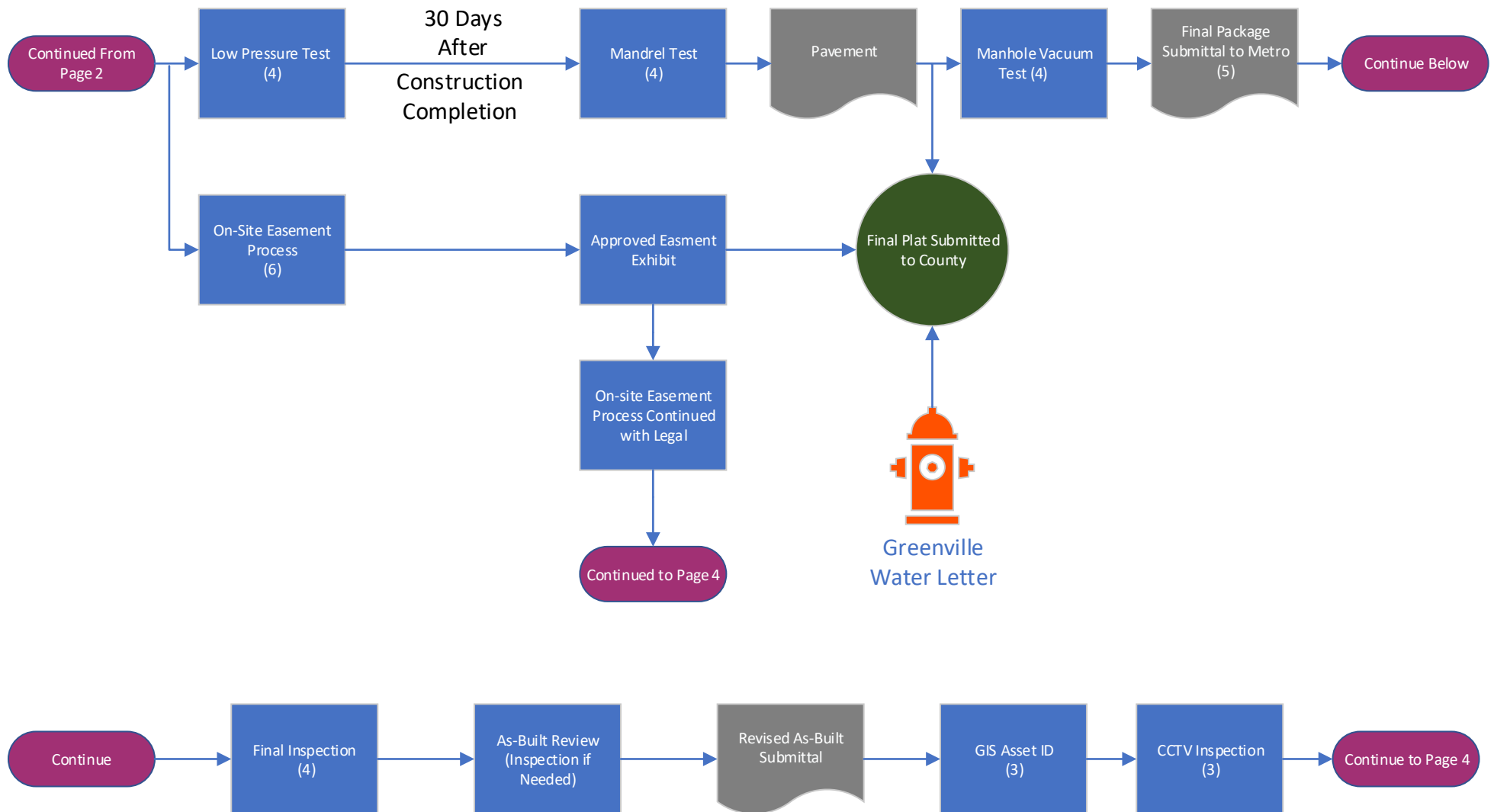
* Project status and general inquiries: **engineering@metroconnects.org**

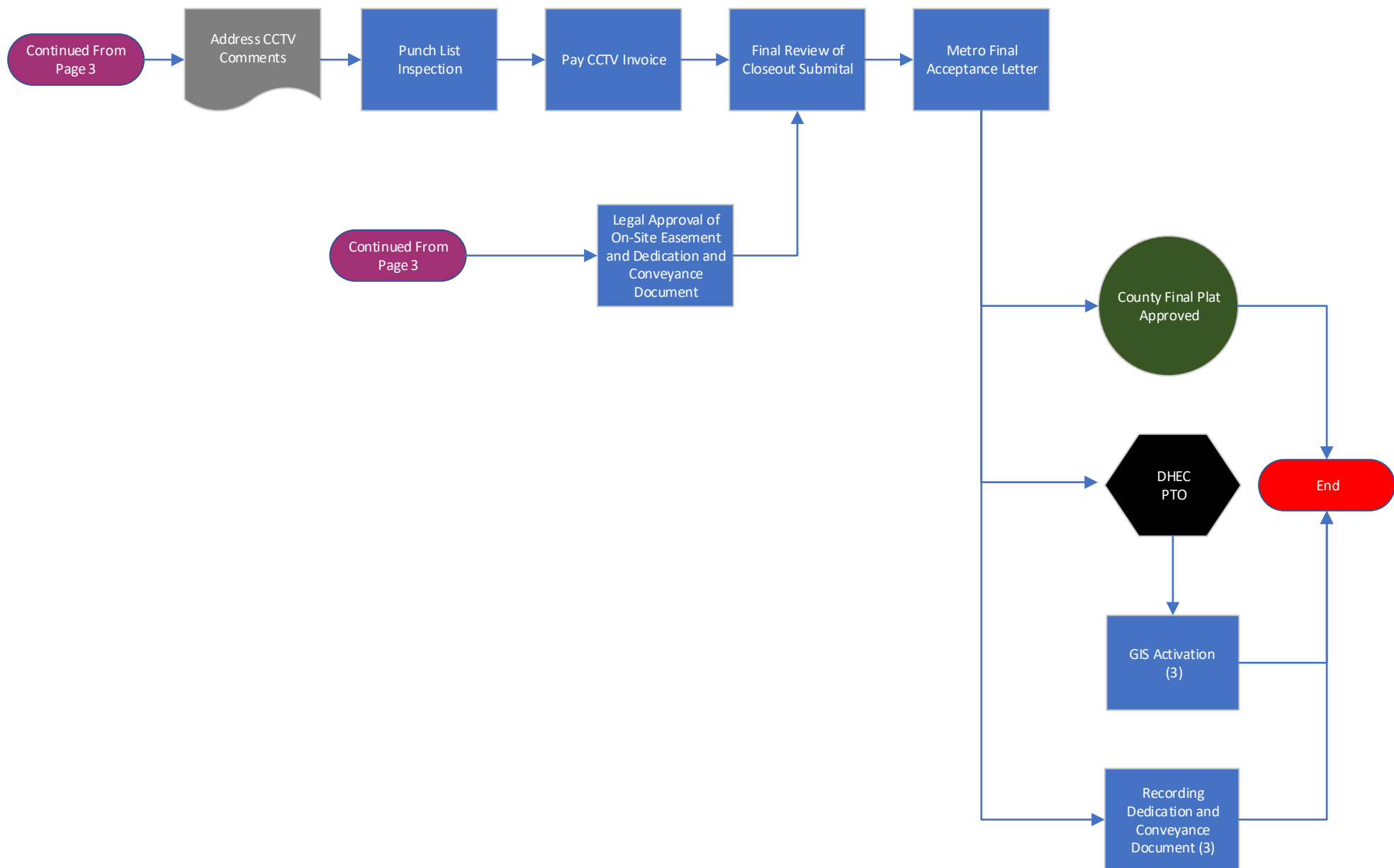
**Legal contact: John M. Walker, Bell Carrington Price & Gregg, LLC

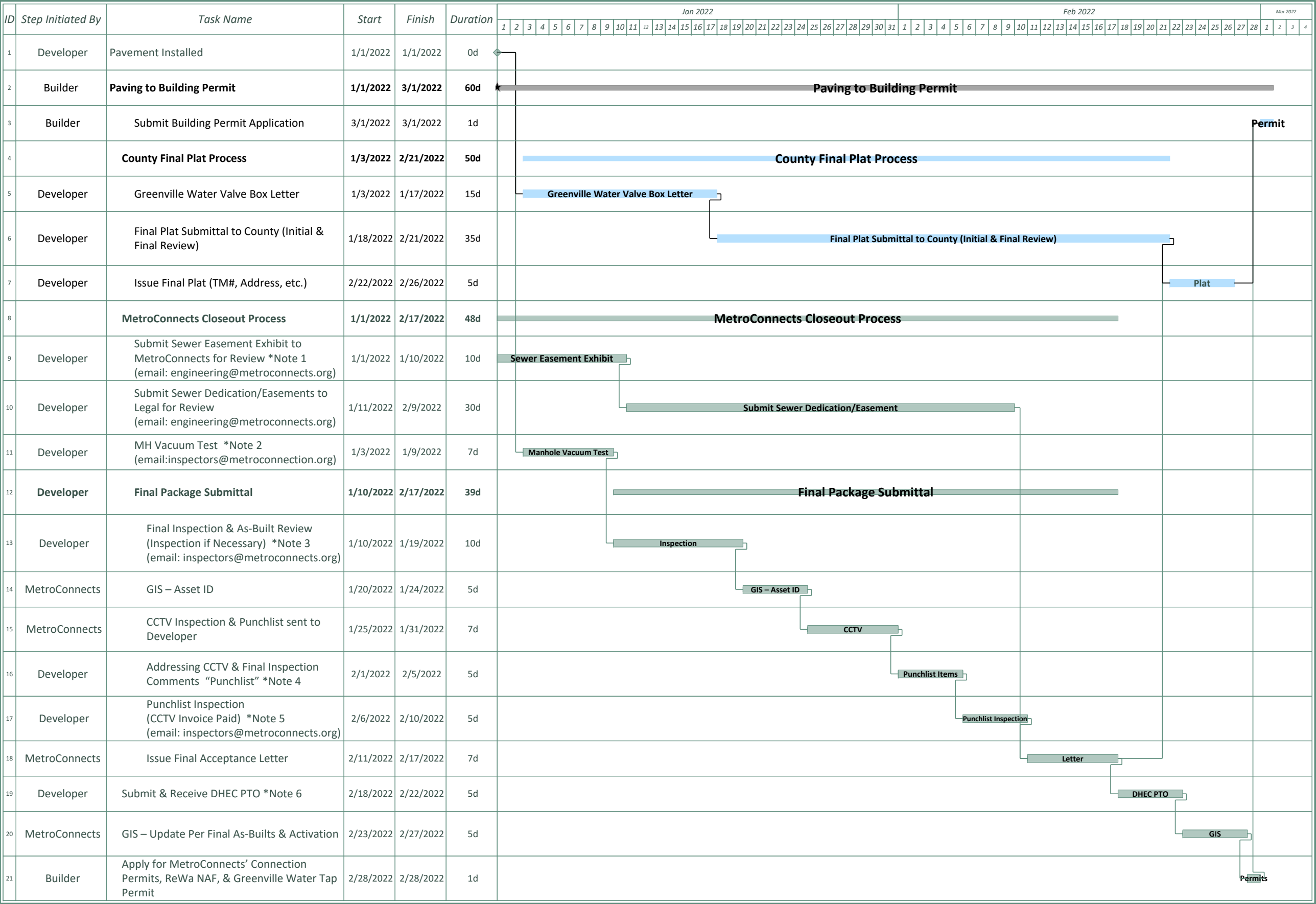
408 E. North Street, Greenville, SC 29601

Phone: (864) 272-0556 Direct: (864) 720-1081 Email: **jwalker@bellcarrington.com**









- General Notes:**
- This Gantt Chart serves as a **general** timeline based on normal conditions. This timeline does not account for holidays, vacation, weather, high volume, pump station reviews, etc.
 - Developer is defined as the engineer, contractor, or any developer representative.
 - This Gantt chart does not supersede the SSS&P requirements, nor is this a guarantee of turnaround time.
 - For current project status information, please email engineering@metroconnects.org.
 - MetroConnects is not responsible for timelines in Gantt chart for other governmental agencies (IE:County).

- Notes:**
1. To expedite the closeout process, it is **recommended** and assumed the record drawings survey and easement exhibits are completed prior to Paving. Manhole rim elevations to be added to record drawings after manhole rims are set/final.
 2. To expedite the closeout process, it is **recommended** and assumed that the developer performs, and coordinates with MetroConnects, a low pressure test and mandrel test prior to Paving.
 3. Developer is **required to perform a pre-inspection** for their project and make corrections prior to scheduling a Final Inspection with MetroConnects. Project record drawings should be reviewed during the developer’s pre-inspection. If it becomes evident that the site or record drawings were not inspected/reviewed by the Developer, MetroConnects will reschedule the Final Inspection. Timeline assumes record drawings are accurate, meeting SSS&P requirements, and does not need to be revised.
 4. Timeline assumes minor punch list corrections to sewer system. It is also recommended that the developer performs an initial CCTV, at their expense, to ensure the sewer system meets MetroConnects standards.
 5. Timeline assumes all punch list items have been repaired and meet MetroConnects standards.
 6. Please ensure MetroConnects receives a copy to DHEC PTO as this will start the next step.